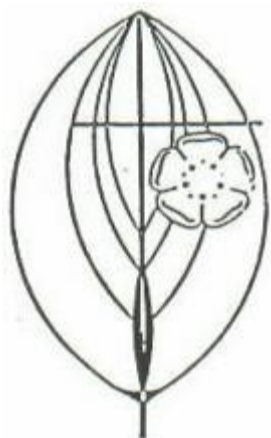


## NEWS AND ANNOUNCEMENTS OF THE LUTHERAN CHURCH OF THE MESSIAH



# Messiah Messenger

407 NASSAU STREET PRINCETON NJ 08540  
 CHURCH EMAIL: LCMPRINCETON@GMAIL.COM  
 WEBSITE: WWW.PRINCETONLUTHERANCHURCH.ORG

## COME AND SEE

### *Come and See*

**THE REV. DR.  
 MARTIN ERHARDT  
 PASTOR**

**THE REV. DR.  
 JOHN MARK GOERSS  
 PASTOR EMERITUS**

**JANICE HOFREITER  
 ORGANIST AND  
 CHOIR DIRECTOR**

**EVA GROVES  
 CHURCH SECRETARY  
 EVA.M.GROVES@GMAIL.COM**

If you've attended Sunday morning Bible class recently, you'll know that one of the challenges of taking weekly scripture readings from a lectionary (in our case, the Revised Common Lectionary) is that it presents pastors with choices. Each week, I ask myself, "Which texts will I preach on this Sunday?"

It's nice to have choices. It's also not nice, because making choices requires energy. And we each have a limited supply of that. This makes stewardship a challenging task, because being a faithful steward typically involves deciding among a variety of alternatives.



We at Messiah have some significant choices to make in the near future. One is about how we will use our fellowship hall during the week next academic year. One possibility is to continue with our plan to start a pre-school there. Another is to rent that space to another organization, as we have in the past. Both have pros and cons, and as far as I know, God does not speak directly to the issue of pre-schools in scripture. We are fortunate in having multiple good options among which to choose.

*Continued on next page*

## LETTER FROM PASTOR ERHARDT

---



In the Gospel Lesson for the Second Sunday in Epiphany (John 1: 43-51), Philip responds to Nathanael's cynical question, "Can anything good come out of Nazareth?" with "Come and see." Philip's response is a model for our evangelical outreach as a Christian community. However we decide to use our fellowship hall, let's be thinking of what we can invite people to come and see. What would we like people to come, see, and get involved in? What would we ourselves like to see at Messiah? How can we make our congregational life together an expression of life in God's kingdom and a faithful response to God's Word? I, for one, am grateful for so much that is already happening among us. I love our worship life, fellowship events, and the wonderful people who gather together each week around God's Word and Sacraments. It's all the more inspiring that we do this freely instead of from compulsion.

One upcoming opportunity to invite people to come and see at Messiah will be the soup & salad suppers and evening prayer services on Wednesdays during Lent (February 22 - March 28). The schedule:

6:00pm -- Soup and Salad Supper

7:00-7:45pm -- Evening Prayer Service

If you're able to volunteer to help prepare a meal, please contact Eva Groves in person or by email at [Eva.M.Groves@gmail.com](mailto:Eva.M.Groves@gmail.com). If you're able to attend and/or invite people to come and see, do that -- no contacting is necessary!

If you have ideas, time, and energy to contribute to what we can invite people to come and see at Messiah, please let me know by email at [lcmprinceton@gmail.com](mailto:lcmprinceton@gmail.com), by phone at 609-924-3642, or in person.

We are in the enviable position of having choices about how to be good stewards of God's gifts and faithful heralds of God's kingdom. I look forward to seeing how God will work through our choices as we invite others to come and see God at work among us.

*Pastor Erhardt*

---

## ANNOUNCEMENTS

### Wednesday 6pm Lenten Soup and Salad Schedule

February 22

Ash Wed

Eva Groves



Swedish Yellow Pea

Soup

Chicken Tortilla

Mixed Green Salad

Whole grain baguettes

Tortilla Chips

February 29

Esther Fischer

Lentil

Mixed Green Salad

Homemade bread

March 7

Renate Giller

Potato Soup

Mixed Green Salad

Bread

March 14

Paula Hartman

?

Salad

March 21

Carolyn Gishlick

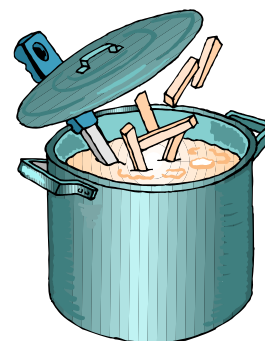
?

Salad

March 28

?

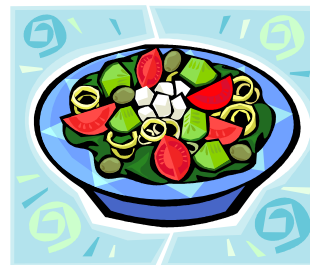
Salad



### WE NEED ONE MORE VOLUNTEER FOR MARCH 28TH

Come join us for dinner before Lenten services beginning on Ash Wednesday, February 22. Two different soups will be served to kick off the Lenten season. The following weeks we will serve one type of soup with salad and bread.

If you'd like to volunteer to help, (we need a volunteer for March 28th) but can't cook during the week, you may bring your soup to church on Sunday, and we will warm it for you on Wednesday!



Call or email Eva Groves for details and more information. Hope to see you at the weekly Lenten dinners!

Need recipe ideas? Vegetable, Butternut Squash, Carrot, Pumpkin, Corn Chowder, Clam Chowder (Pastor Martin likes the Manhattan Style...) so many possibilities.... What is your favorite?



## BLAST FROM THE PAST...

**OUR RECORD**  
This publication is the OLDEST WEEKLY NEWSPAPER in the State of New Jersey and the FIFTH OLDEST in America.

# The Packet

ESTABLISHED IN 1786

**OUR POLICY**  
To promote the interest and welfare of the community; to censure when necessary but without to construct rather than destroy.

---

ONE HUNDRED AND SIXTY-FIFTH YEAR—No. 43      PRINCETON, N. J., THURSDAY, NOVEMBER 30, 1950      FIVE CENTS A COPY—\$2.50 A YEAR

### Snapshots of What the Wild Winds Left in Their Wake



—Staff Photo by Palmer Lips

This huge hunk of stone dropped several stories from the very top of Palmer Laboratory and wrecked a Buick owned by senior James M. Tuck, which was parked by the main entrance. A long 20-foot-wide section of the copper and wooden roof of the building was also ripped off by the destructive wind Saturday. From the top of the University Chapel, a massive piece of stone was also blown off and smacked the sidewalk far below. Another slender stone spire, some six feet tall also, was broken off during the storm and remained balanced on the edge of the Chapel roof. Workmen started construction of a scaffolding.

### Hurricane Winds and Driving Rain Bring Havoc To Borough, Township and Surrounding Area

**Lutherans to Build New \$87,000 Church**

Ground will be broken in the near future for a new \$87,000 Lutheran Church at the corner of Nassau Street and Cedar Lane, Pastor Rilton J. Nass announced yesterday. Construction of the church, which will seat 150, may begin within the next two or three weeks and the building is expected to be completed by early summer. Lewis C. Bowers and Sons, Inc., will be the builder, although the interior painting and some of the cabinet work will be done by members of the congregation.

Original plans for a Gothic-style church have been discarded in favor of a building of simple modern construction with a full basement, Rev. Nass reported. He said the cost of the proposed church has been increased since the first plans were made.

Members of the building committee are Professor A. E. Sorensen, Martin Maass, Warren Froelich and Eric Jungberg. Architect of the new building is Harold C. Bernhardt of New York City.

Rev. Nass explained that the \$87,000 total cost of the church includes furniture, and that the construction contract is less than this amount.

Lutheran services in Princeton began on Easter Sunday of 1947 with a nucleus of one family. The congregation now includes 120 members.

### Nassau Street During Saturday's 'Shower'



### Roofs Blown Off, Scores of Trees Are Destroyed

With hurricane wind and a pelting rain the worst storm that has ever hit this vicinity broke here early Saturday morning and continued unabated, leaving in its trail unroofed buildings, hundreds of fallen trees and broken limbs, smashed telephone and electric wires, broken and twisted television aerials and broken sections of two or three University buildings. Homes all over town were without heat, water pressure, light, and for a time telephone communication, while the lack of electricity played havoc with refrigerators and cold storages, causing much food to be spoiled and wasted. Candles were in demand, and those with fireplaces or coal burning furnaces were in luck. The town was practically in darkness from the middle of the afternoon owing to the darkened sky, and stores and restaurants closed for lack of light and while all this was taking place, Princeton and Dartmouth were playing their scheduled football game in the mud and muck. Around 5,000 spectators attended, while some 25,000 other ticket holders stayed away. (Princeton 13, Dartmouth 7.)

The wind at times had a velocity of 80 to 90 miles per hour, and in some parts of the state it was listed at 105. In a few parts of town it was possible to have light earlier than others, but in the Wiggins and Moore Street sections, the circuit was not repaired till 9 or 10 P. M. Sunday night. Worse still, eyes

Note the front page news of this November 30, 1950 Princeton Packet ! Lutherans to Build a New \$87,000 church on the corner of Nassau Street and Cedar Lane.....

This month's quiz question: **The church was built to seat how many people?**

If you think you know, email or see Eva with your answer!

## LAST MONTH'S QUIZ WINNER

In answer to the question asked in the last issue of the Messenger. *Who is the little boy?*

Pastor John Goerss, Esther Fischer and Martha Peck all guessed correctly! Pastor Goerss was the first to email the church with the answer, so he is our official winner. Please see Pastor Martin for your prize!

Answer:

**The little boy's name is Jim West and he grew up to be a pastor !**



Photo of Messiah's first worship service given to Messiah by Martha Peck. c. 1952.

## CHILDREN'S MINISTRY

### COLD WEATHER CLOTHING DRIVE

Thank you to everyone who donated coats, scarves and hats to the Sunday School cold weather clothing drive!



### CHILDREN'S SERMON



*Katarina, Pastor Erhardt and Danny*

Katarina readily shares her knowledge of credit cards.

How did Pastor compare Frequent Flyer Credit Cards to sharing the Gospel?

Come and See!

TV? Video Games?



*Pastor Erhardt, Danny, Drew, Samuel and Katie*

Pastor Erhardt asks the Sunday School children:  
What are some good things you get too attached to?

## UPCOMING READINGS

Readings taken from website: <http://lectionary.library.vanderbilt.edu/>

<b><u>Presentation of the Lord</u></b> February 2, 2012	<a href="#">Malachi 3:1-4</a>	<a href="#">Psalm 84</a> or <a href="#">Psalm 24:7-10</a>	<a href="#">Hebrews 2:14-18</a>	<a href="#">Luke 2:22-40</a>
<b><u>Fifth Sunday after the Epiphany</u></b> February 5, 2012	<a href="#">Isaiah 40:21-31</a>	<a href="#">Psalm 147:1-11, 20c</a>	<a href="#">1 Corinthians 9:16-23</a>	<a href="#">Mark 1:29-39</a>
<b><u>Sixth Sunday after the Epiphany</u></b> February 12, 2012	<a href="#">2 Kings 5:1-14</a>	<a href="#">Psalm 30</a>	<a href="#">1 Corinthians 9:24-27</a>	<a href="#">Mark 1:40-45</a>
<b><u>Transfiguration Sunday</u></b> February 19, 2012 (Last Sunday before Lent)	<a href="#">2 Kings 2:1-12</a>	<a href="#">Psalm 50:1-6</a>	<a href="#">2 Corinthians 4:3-6</a>	<a href="#">Mark 9:2-9</a>

Lent Year B	First reading	Psalm	Second reading	Gospel
<b><u>Ash Wednesday</u></b> February 22, 2012	<a href="#">Joel 2:1-2, 12-17</a> or <a href="#">Isaiah 58:1-12</a>	<a href="#">Psalm 51:1-17</a>	<a href="#">2 Corinthians 5:20b-6:10</a>	<a href="#">Matthew 6:1-6, 16-21</a>
<b><u>First Sunday in Lent</u></b> February 26, 2012 <i>ART -- PRAYER</i>	<a href="#">Genesis 9:8-17</a>	<a href="#">Psalm 25:1-10</a>	<a href="#">1 Peter 3:18-22</a>	<a href="#">Mark 1:9-15</a>
<b><u>Second Sunday in Lent</u></b> March 4, 2012 <i>ART -- PRAYER</i>	<a href="#">Genesis 17:1-7, 15-16</a>	<a href="#">Psalm 22:23-31</a>	<a href="#">Romans 4:13-25</a>	<a href="#">Mark 8:31-38</a> or <a href="#">Mark 9:2-9</a>
<b><u>Third Sunday in Lent</u></b> March 11, 2012	<a href="#">Exodus 20:1-17</a>	<a href="#">Psalm 19</a>	<a href="#">1 Corinthians 1:18-25</a>	<a href="#">John 2:13-22</a>



## COMING SOON! MARDI GRAS POTLUCK DINNER

### Fat Tuesday Celebration

It is time to share your most decadent recipes! Last chance to indulge before Lent begins on Ash Wednesday. Join us at 6:00pm on Saturday, February 18th. Bring one main dish, one side and one or more neighbors. Hope to see you there!



### History of Mardi Gras

*Mardi gras* is French for **Fat Tuesday**, referring to the practice of the last night of eating richer, fatty foods before the ritual fasting of the Lenten season which begins on Ash Wednesday.



## 2012 SERMONS

If you miss a Sunday sermon, it is easy to catch up. Visit our website and click on the "Worship" Tab and choose "Services and Sermon Audios" on the pull down menu.

You will see the text below. If using Internet Explorer, you can click on the underlined sermon title to listen to an audio recording: if using another browser, e.g. Safari, Firefox, Google Chrome, etc. please click on the "Other Browsers" link to listen to the sermon.

Jan 29	1 Cor 8:1-13 Mark 1:14-20	<a href="#">"Possessed? Me?!"</a> ( <a href="#">Other Browsers</a> ) Pastor Martin Erhardt
Jan 22	Jonah 3:1-5, 10 1 Cor 7:29-31 Mark 1:21-28	<a href="#">"Call Us Crazy"</a> ( <a href="#">Other Browsers</a> ) Pastor Martin Erhardt
Jan 15	1 Corinthians 6:19-20	<a href="#">"You are not Your Own"</a> ( <a href="#">Other Browsers</a> ) Pastor Martin Erhardt
Jan 8	Gen 1:1-5 Acts 19:1-2 Mark 1:19-11	<a href="#">"Into the Chaos"</a> ( <a href="#">Other Browsers</a> ) Pastor Martin Erhardt
Jan 1	<b>New Year's Day</b>  Luke 2:20	<a href="#">"The Shepherds Returned"</a> ( <a href="#">Other Browsers</a> ) Pastor Martin Erhardt

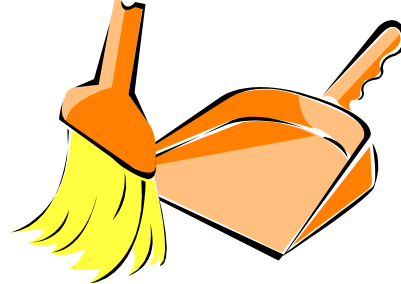
**Visit our website to listen to audio recordings of Pastor's Sunday Sermons.**  
[www.princetonlutheranchurch.org](http://www.princetonlutheranchurch.org)

## VOLUNTEERS!

---

### New Year Goals for the Messiah Church Office

- Volunteers to preserve old bulletins?
- Scanning of old records and photos
- Cleaning out of drawers
- Clearing all surfaces
- Creation of new electronic files



If you have some time to spare and would like to help out in the church office, there is much to be done. Our new copier has arrived and is working well. We can now scan, copy, collate and staple. What a time saver!

Boxes of service folders from past (since 1947) services at Messiah are now in the church office waiting for someone to look through them and to decide which should be kept in the archives, and which we no longer need.

There are boxes of records with staples removed (many thanks to Debbie Zak's school children) waiting to be scanned. If you would like to volunteer some time, we can show you how to use our new copier. Help us to create our new electronic files! Call the church office to volunteer.

---

**KNEELERS** If you'd like a cushion to kneel on during the service, please tell Eva Groves or Pastor Erhardt so we can get an idea of how many to order.

**LUTHERAN CAMPUS MINISTRY** is looking for an organist or pianist to play for Taize-style Evening Prayer at the Princeton University chapel on Tuesday evenings, April 10 – May 15. Compensation will be provided. Please contact Pastor Erhardt if you or someone you know could serve in this way.

**FELLOWSHIP IDEAS?** We'd like to schedule more opportunities for the congregation to get together outside of worship times. Please share your ideas with our social ministry/fellowship chair, Martha Peck.



## MESSIAH'S MANTLES: PRAYER SHAWL MINISTRY

Thank you to Mildred Coyner for hosting a festive evening on January 19th! We are looking forward to our next meeting on March 22. Mark your calendars!

If you would like to have a prayer shawl made for a loved one, you may want to choose a color which describes the personality of the person who will receive the shawl, or perhaps is the color of their birth month? See any one of the prayer shawl knitters to make a request.

COLOR	MEANINGS	BIRTHDAY MONTH
<b>Red</b>	Energy, strength, power, determination, love ,courage	January and July
<b>Pink</b>	Joy, friendship, femininity	
<b>Brown</b>	Stability, masculinity	
<b>Orange</b>	Happiness, success, encouragement, endurance	
<b>Gold</b>	Illumination, wisdom	
<b>Yellow</b>	Cheerfulness, energy, joy, confidence	November
<b>Green</b>	Healing, harmony, safety, hope, protection, peace	August and May
<b>Blue</b>	Stability, trust, loyalty, faith, truth, tranquility	March and September and December
<b>Purple</b>	Wisdom, dignity, independence, creativity, mystery	February
<b>White</b>	Goodness, purity, innocence, faith, safety, light	April and June

The Meanings of colors: (Taken from *The Prayer Shawl Ministry Book* )

Please join us for our next meeting at Mildred Coyner's home on March 22nd. Yarn, needles and instructions are available at every meeting.

Note: (There will be no meeting in February). If you need more yarn, we have a new supply in the church office!

# FEBRUARY 2012

---

			<b>1</b> 8PM CHOIR PRACTICE	<b>2</b>	<b>3</b>	<b>4</b>
<b>5</b> 9AM CHRISTIAN EDUCATION 1030 SERVICE OF HOLY COMMUNION	<b>6</b>	<b>7</b>	<b>8</b> 8PM CHOIR PRACTICE	<b>9</b> 7PM EXECUTIVE BOARD MEETING	<b>10</b>	<b>11</b>
<b>12</b> 9AM CHRISTIAN EDUCATION 1030 SERVICE OF HOLY COMMUNION	<b>13</b>	<b>14</b>	<b>15</b> 8PM CHOIR PRACTICE	<b>16</b>	<b>17</b>	<b>18</b> 6PM MARDI GRAS POTLUCK
<b>19</b> 9AM CHRISTIAN EDUCATION 1030 SERVICE OF HOLY COMMUNION	<b>20</b>	<b>21</b>	<b>22</b> 6PM SOUP & SALAD 7PM ASH WED COMMUNION	<b>23</b>	<b>24</b> 6PM ISI DINNER	<b>25</b>
<b>26</b> 9AM CHRISTIAN EDUCATION 1030 SERVICE OF HOLY COMMUNION	<b>27</b>	<b>28</b>	<b>29</b> 6PM SOUP & SALAD 7PM EVENING PRAYER 8PM CHOIR			